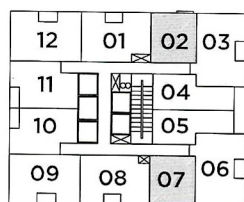
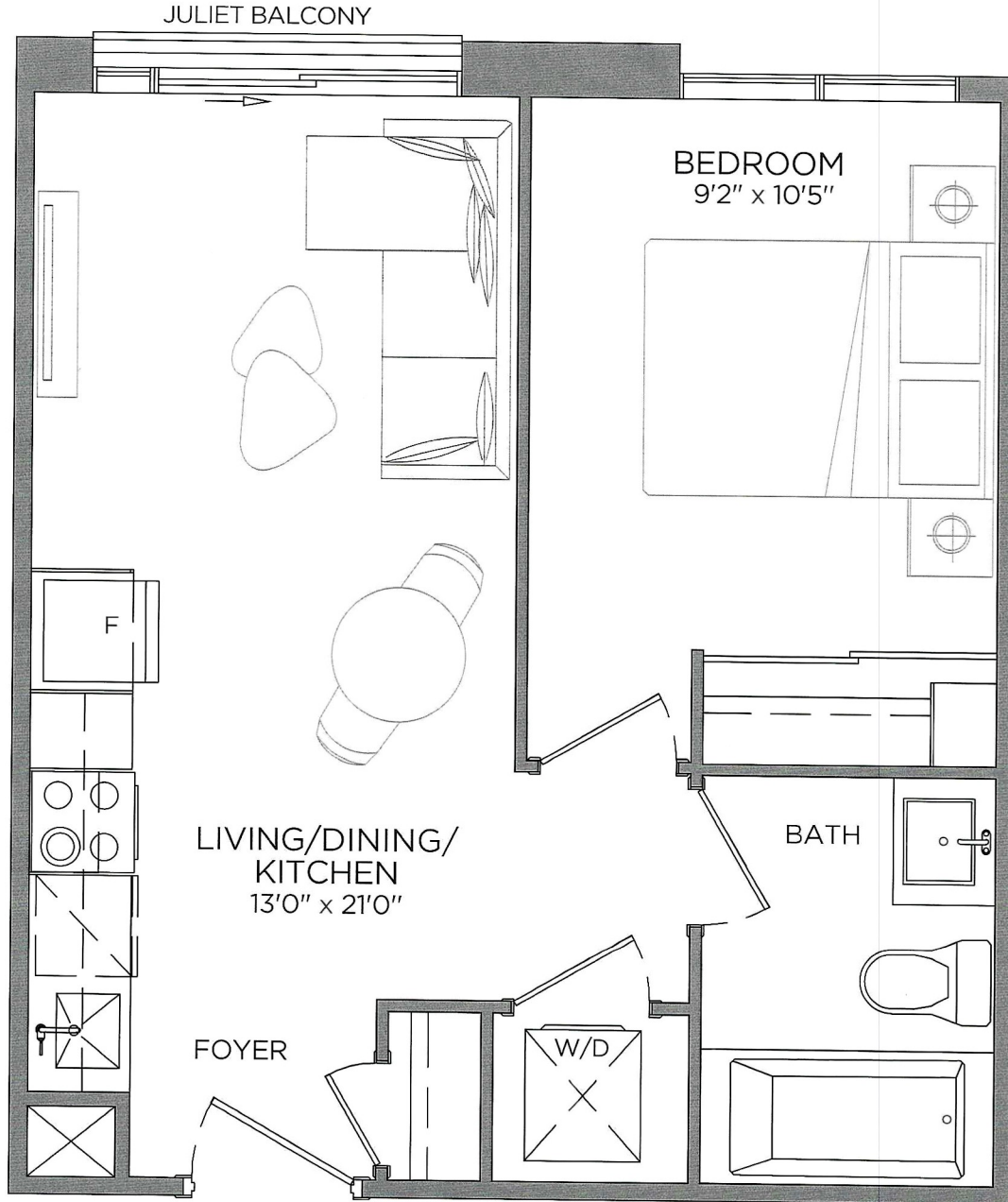




BRISTOL PLACE
BRAMPTON

SUITE 1A - 447 SQ FT

1 BEDROOM | 1 BATH



All areas and stated room dimensions are approximate. Floor area measured in accordance with Tarion requirements. Actual living area will vary from floor area stated. Furniture not included. Plan may be reversed. All illustrations are artist's concept. E. & O.E. September 2022

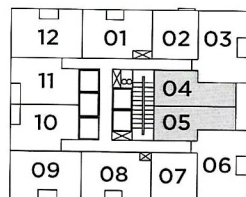
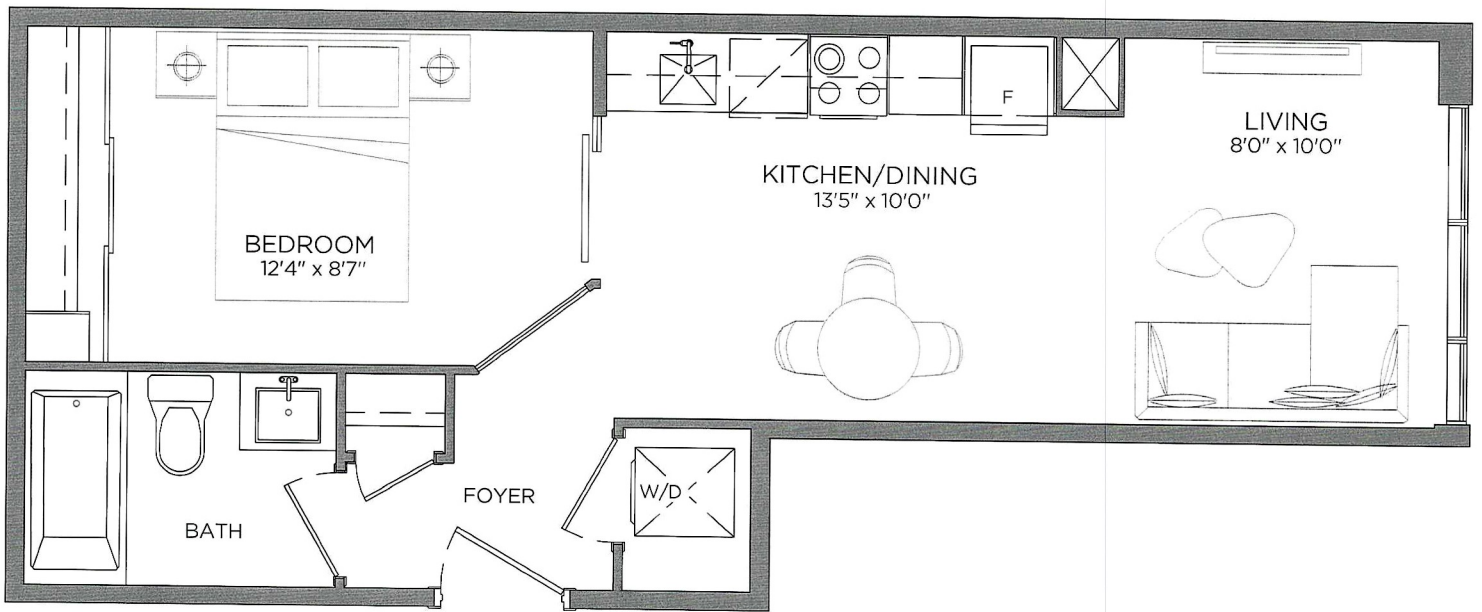




BRISTOL PLACE
BRAMPTON

SUITE 1B - 502 SQ FT

1 BEDROOM | 1 BATH



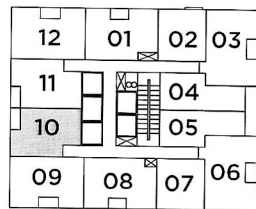
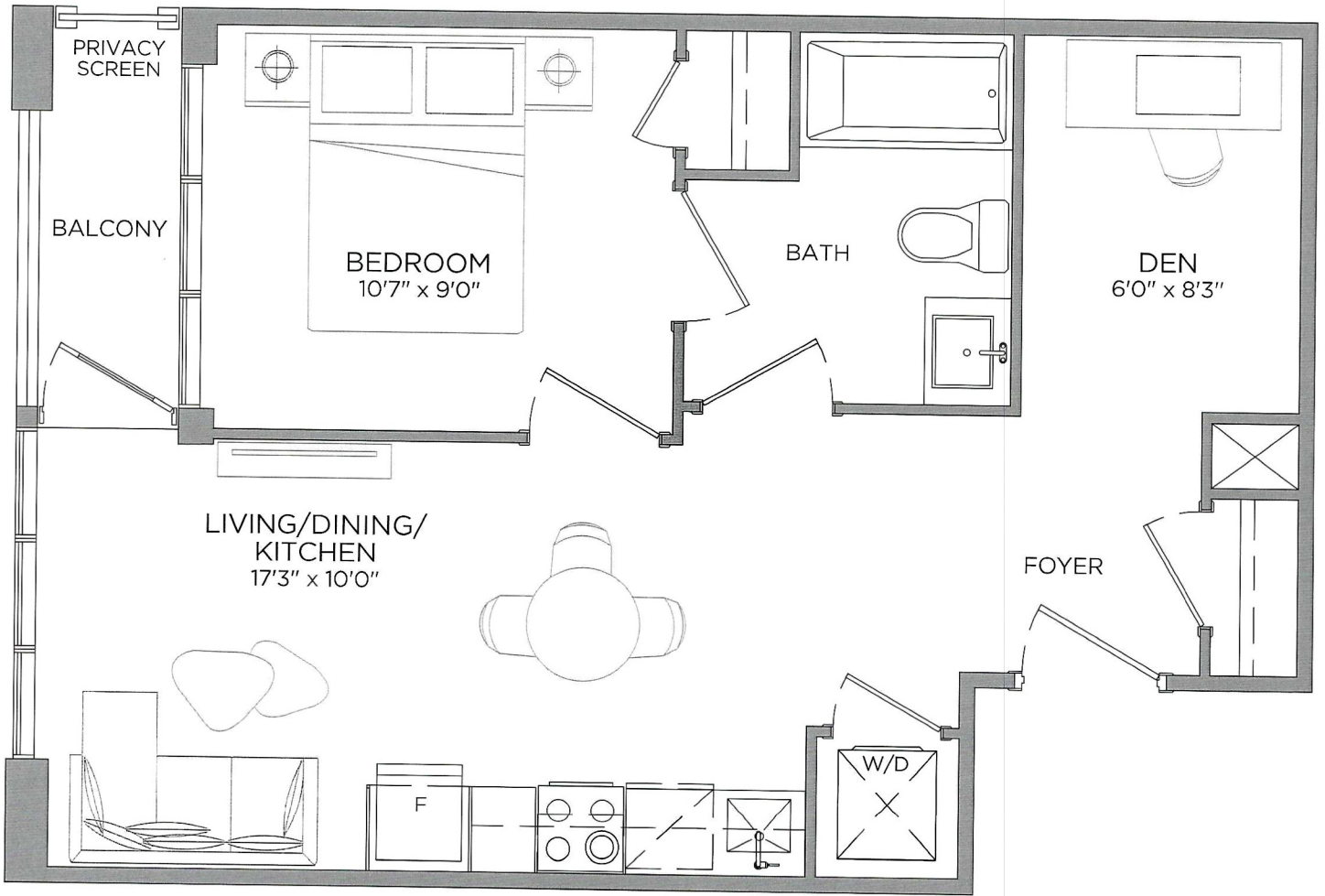
All areas and stated room dimensions are approximate. Floor area measured in accordance with Taron requirements. Actual living area will vary from floor area stated. Furniture not included. Plan may be reversed. All illustrations are artist's concept. E. & O.E. September 2022



BRISTOL PLACE
BRAMPTON

SUITE 1C - 552 SQ FT

32 SQ. FT. BALCONY | TOTAL LIVING SPACE 584 SQ. FT.
1 BEDROOM + DEN | 1 BATH



8 - 47TH FLOOR

All areas and stated room dimensions are approximate. Floor area measured in accordance with Tarion requirements. Actual living area will vary from floor area stated. Furniture not included. Plan may be reversed. All illustrations are artist's concept. E. & O.E. September 2022

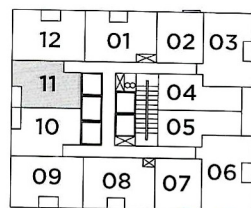
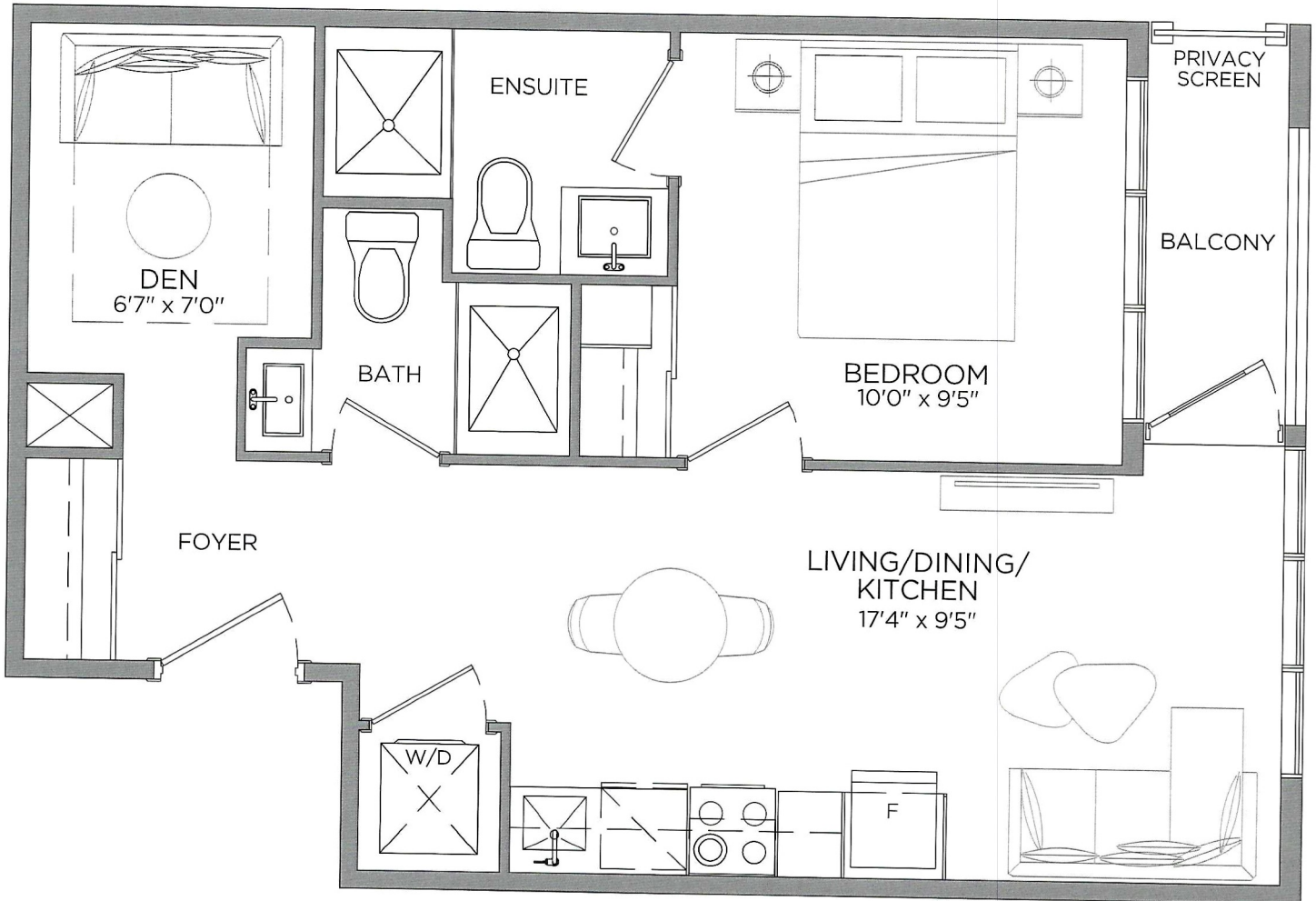




BRISTOL PLACE
BRAMPTON

SUITE 1D - 552 SQ FT

32 SQ. FT. BALCONY | TOTAL LIVING SPACE 584 SQ. FT.
1 BEDROOM + DEN | 2 BATH



8 - 47TH FLOOR

All areas and stated room dimensions are approximate. Floor area measured in accordance with Tarion requirements. Actual living area will vary from floor area stated. Furniture not included. Plan may be reversed. All illustrations are artist's concept. E. & O.E. September 2022

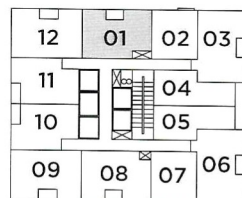
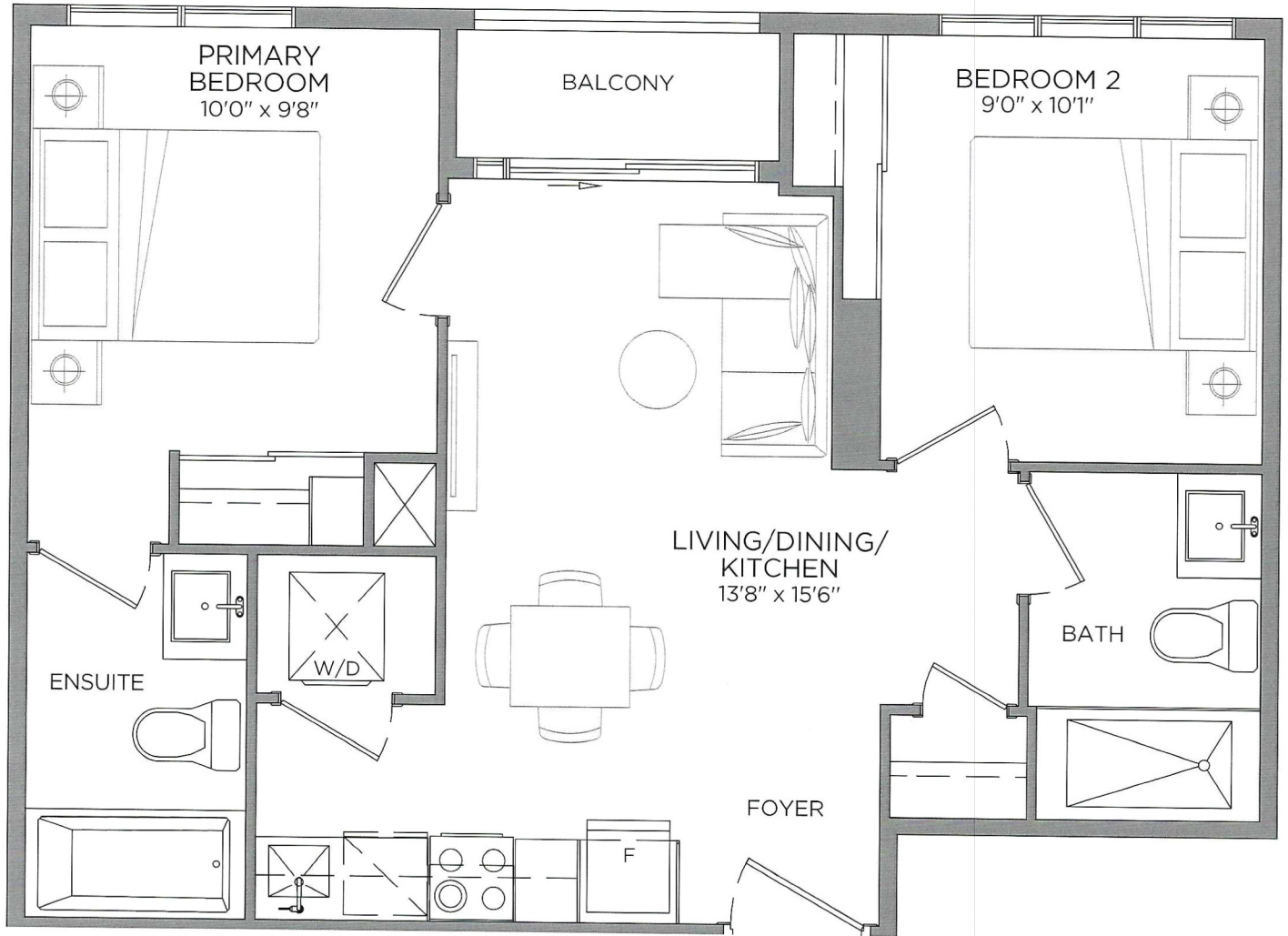
SOLMAR
DEVELOPMENT CORP.



BRISTOL PLACE
BRAMPTON

SUITE 2A - 635 SQ FT

24 SQ. FT. BALCONY | TOTAL LIVING SPACE 659 SQ. FT.
2 BEDROOM | 2 BATH



8 - 47TH FLOOR

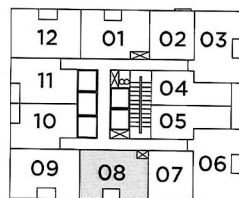
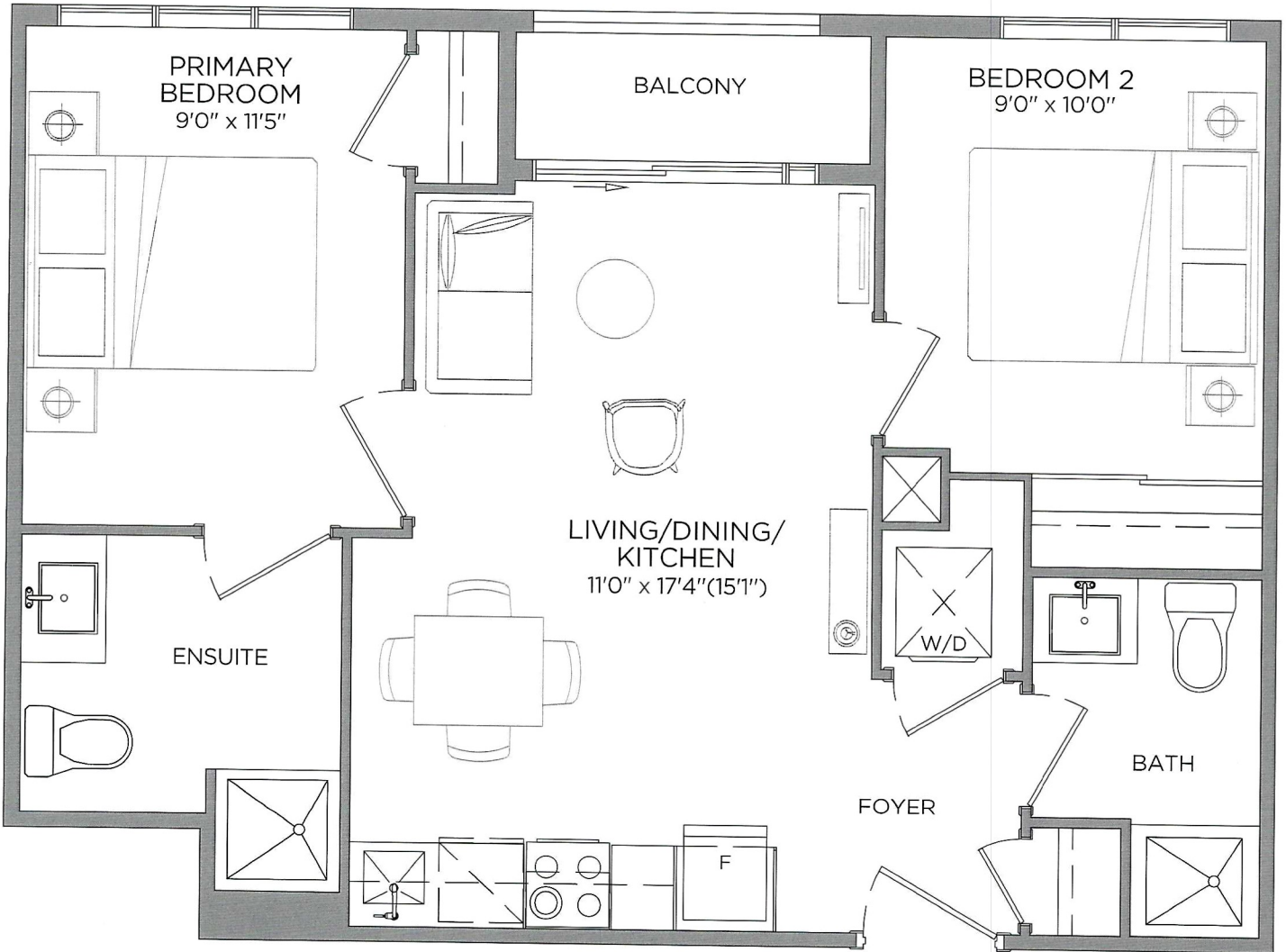
All areas and stated room dimensions are approximate. Floor area measured in accordance with Tarion requirements. Actual living area will vary from floor area stated. Furniture not included. Plan may be reversed. All illustrations are artist's concept. E. & O.E. September 2022



BRISTOL PLACE
BRAMPTON

SUITE 2B - 645 SQ FT

24 SQ. FT. BALCONY | TOTAL LIVING SPACE 669 SQ. FT.
2 BEDROOM | 2 BATH



8 - 47TH FLOOR

All areas and stated room dimensions are approximate. Floor area measured in accordance with Tarion requirements. Actual living area will vary from floor area stated. Furniture not included. Plan may be reversed. All illustrations are artist's concept. E. & O.E. September 2022

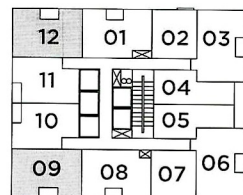
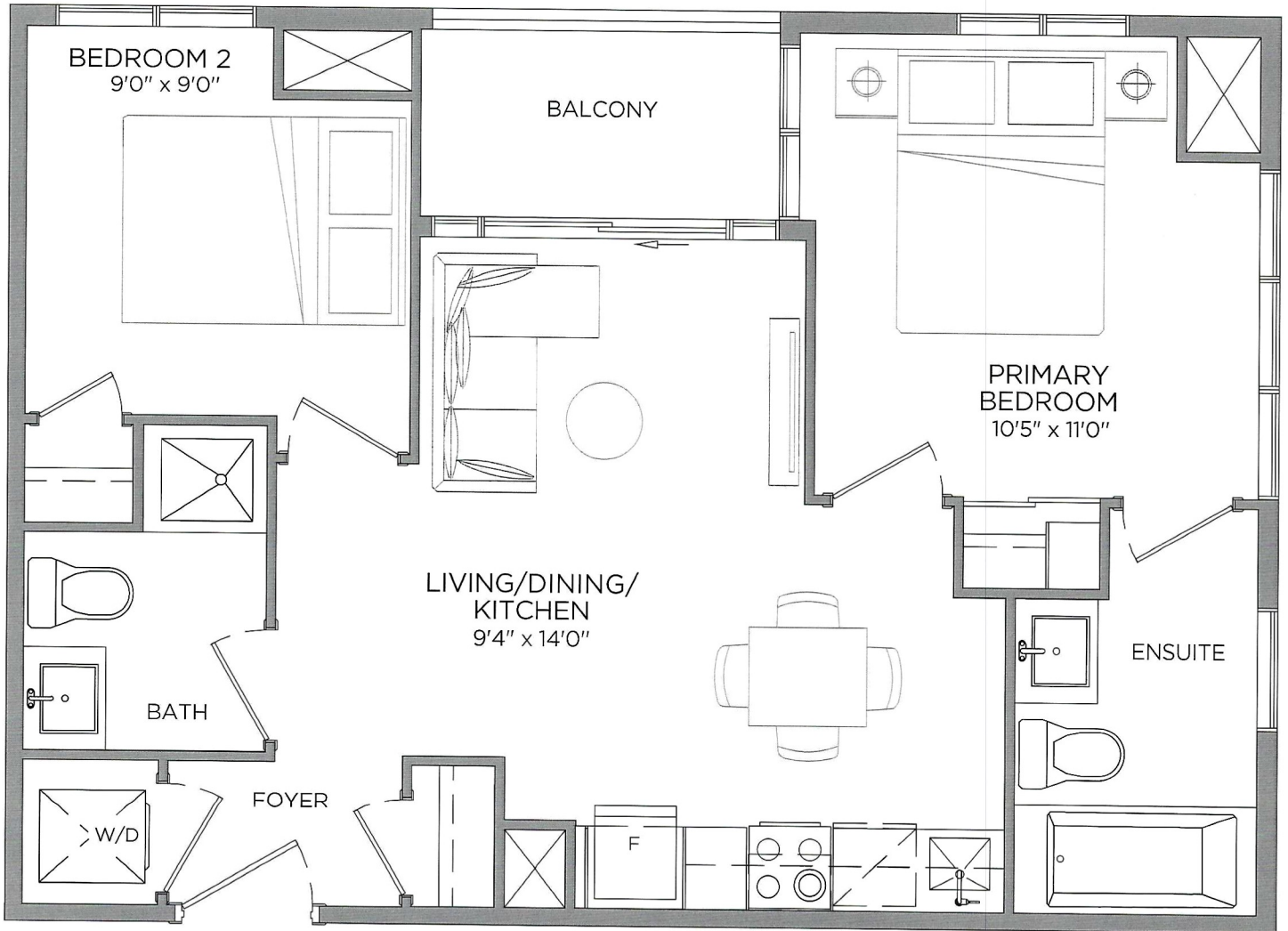




BRISTOL PLACE
BRAMPTON

SUITE 2C - 654 SQ FT

42 SQ. FT. BALCONY | TOTAL LIVING SPACE 696 SQ. FT.
2 BEDROOM | 2 BATH



8 - 47TH FLOOR

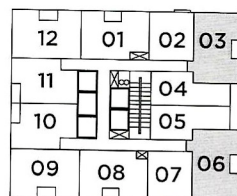
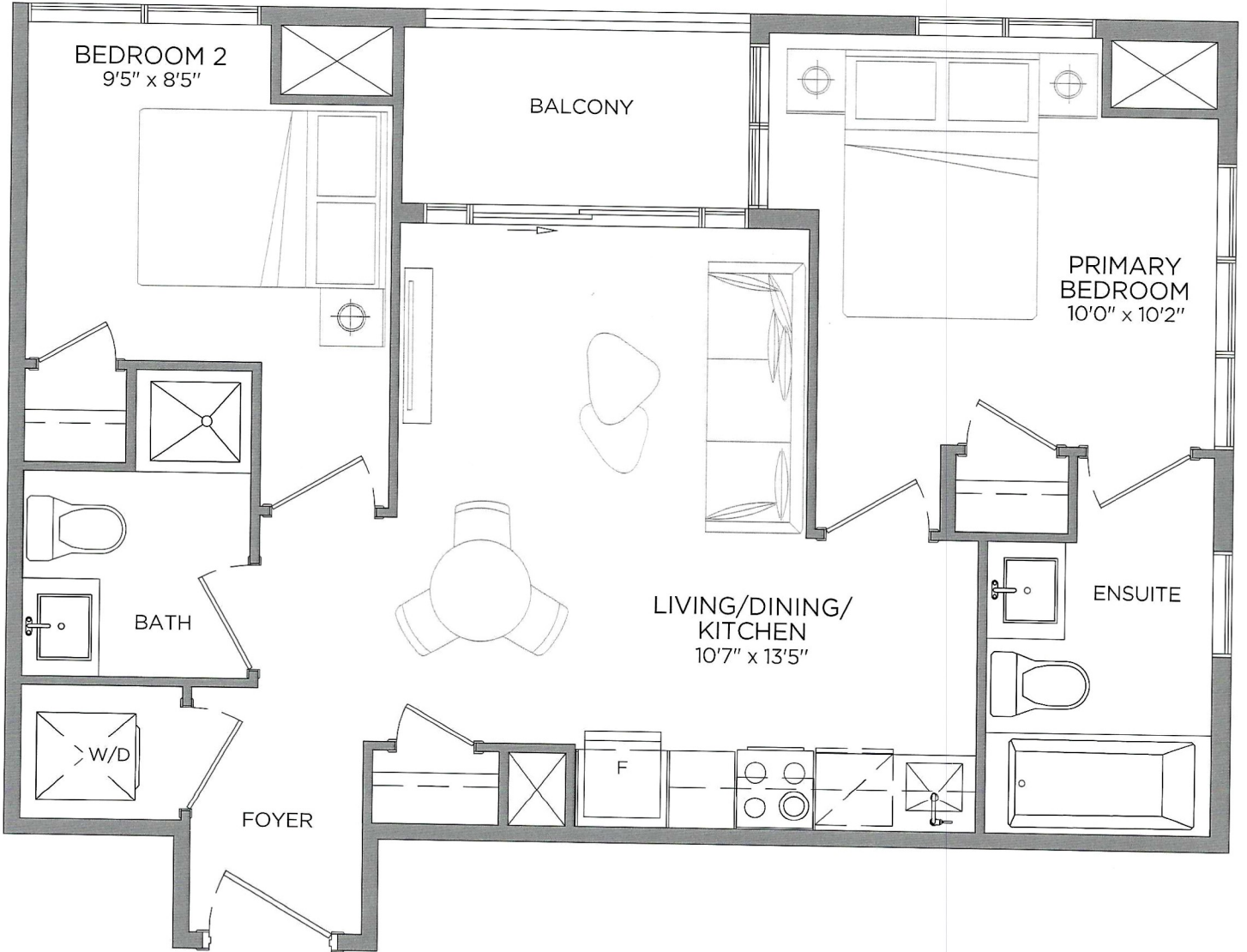
All areas and stated room dimensions are approximate. Floor area measured in accordance with Tarion requirements. Actual living area will vary from floor area stated. Furniture not included. Plan may be reversed. All illustrations are artist's concept. E. & O.E. September 2022



BRISTOL PLACE
BRAMPTON

SUITE 2D - 665 SQ FT

42 SQ. FT. BALCONY | TOTAL LIVING SPACE 707 SQ. FT.
2 BEDROOM | 2 BATH



8 - 47TH FLOOR

All areas and stated room dimensions are approximate. Floor area measured in accordance with Tarion requirements. Actual living area will vary from floor area stated. Furniture not included. Plan may be reversed. All illustrations are artist's concept. E. & O.E. September 2022